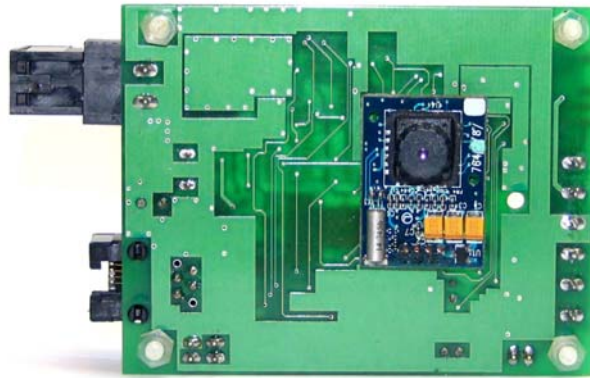




Pix-Cell Camera



You can't be everywhere at once, but with the **Pix-Cell Camera** you can keep your eyes on places that are important to you, even when you're not there. Install it at your home or office, inside a warehouse, garage, in your boat, or summerhouse. Simply request a picture via text message and keep your eyes open!

The **Pix-Cell Camera** is a high performance, programmable Cellular Single Board Controller, that offers built-in digital and analog I/O combined with GSM/GPRS connectivity in a compact form factor. With this GSM camera it is possible to take a picture and send it all over the world.

Features:

- Small Size: 95x60x15mm.
- JPEG resolution 640x480, 320x240.
- Remote camera activation through SMS or short call.
- Microchip PIC18F6722 controller@32MHz.
- 128KB Flash for user memory application.
- 32kB of EEPROM Memory.
- 3 Protected Digital Inputs.
- 3 10-bit Analog Inputs.
- SPDT Relay Output.
- RS232 serial communication.

Application:

The Pix-Cell Camera controller can be used in a wide range of applications:

- Alarm Systems.
- Remote Control.
- Surveillance.
- Passageway Control.
- Traffic Control.

Specification:

Power Requirement

Input Voltage Range	9-16 VDC
Input Current,no GSM f=32Mhz	48 mA@12Vdc
Input Current, GSM Transmitting	500 mA@12Vdc

Inputs Characteristic

Number of inputs	3
Number of commons	1
Input impedance	6.6KOhm
Input voltage "ON" level range	2.5 – 40 Vdc
Input Voltage Surge protection	±100 V

Analog Characteristic

Number of channels	3
Input Range	0-5 Vdc All inputs 4-20mA@ Input3
Resolution	10-bit
Conversion Time	6 μS

Output Characteristic

Type of Output	Dry contact.
Number of output	1
Rating	50Vdc@0.5A